



Cissbury Ring North, Woodside Park, N12 7AH  
Guide Price £1,495,000 Freehold Council Tax Band F

**REAL ESTATES**  
Est.1981

Estate Agents · Residential Sales · Investments · Lettings

Real Estates are delighted to bring to the market this stunning FOUR BEDROOM SEMI-DETACHED house set on a quiet residential street in the heart of Woodside Park.

Recently renovated to the absolute highest standard, this incredibly modern home comes fit with a SWIMMING POOL, a large powered OUTHOUSE and a CAR PORT. Other features include CEILING SPEAKERS and AIR CONDITIONING.

The ground floor has been extended to create a vast open plan living, kitchen and dining space, with bifold doors leading onto the tiled patio area. The upstairs accommodation provides two double bedrooms, one single bedroom and a family bathroom on the first floor, whilst the loft has been converted into a principal bedroom with en-suite, storage and JULIET BALCONY.

Externally, there is a PRIVATE DRIVEWAY for multiple cars plus a TURFED REAR GARDEN.

Cissbury Ring North is well located for Woodside Park Underground Station as well as the popular coffee shops on Sussex Ring and Frith Manor Primary School.

SOLE AGENT



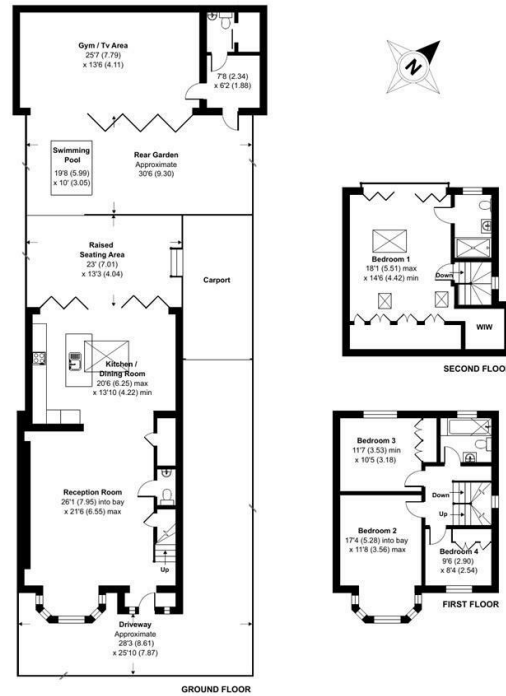


# Cissbury Ring North, London, N12

Approximate Area = 1895 sq ft / 176 sq m  
 Outbuilding = 470 sq ft / 43.6 sq m  
 Total = 2365 sq ft / 219.7 sq m  
 For identification only - Not to scale

Energy Efficiency Rating		Current	Potential
Very energy efficient - lower running costs	A		
Energy efficient - lower running costs	B		
Decent energy efficiency - lower running costs	C	74	82
Some energy efficiency - lower running costs	D		
Low energy efficiency - higher running costs	E		
Very low energy efficiency - higher running costs	F		
Least energy efficient - higher running costs	G		

EU Directive



Certified Property Measurer. Floor plan produced in accordance with RICS Property Measurement Standards incorporating International Property Measurement Standards (IPMS Residential). © rinchecom 2023. Produced for Real Estates - REF: 1044296



Real Estates Woodside Park Office:  
 14/14a Sussex Ring  
 Woodside Park N12 7HX

ll : 020 8445 6387  
 e : info@realestates-wsp.co.uk  
 w : www.realestates-wsp.co.uk